

Carestream

DRX-Compass Family



Efficiency. Expandability. Ease of use.

Navigate New Directions in Performance and Flexibility.



SMART IMAGING SOLUTIONS

Versatility Meets Value.

Staying on course to the future of imaging can be difficult. Many facilities today, and possibly yours, would like to step up to the benefits of a full X-ray suite with advanced features. And naturally, you want the versatility, functionality and quality that you can rely on through the years and growth of your facility. But perhaps you've been waiting for a clear direction on which path to choose.

It's here. Just as a compass always points north, the CARESTREAM DRX-Compass X-ray System points the way to a successful future. It has just the right selection of features and options to streamline your workflow now, and it provides a clear and efficient expansion pathway for the future.

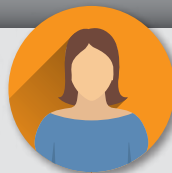
Whatever your needs, the DRX-Compass will keep you on the right road to superb performance with a solution that will grow along with you.

Advantages at a Glance

- Exceptional image quality to support accurate diagnoses
- Scalable and upgradeable technology to help eliminate obsolescence
- Wide selection of components to configure the ideal system for your needs
- Advanced Smart Features to automate tasks and workflow steps that streamline processes, support radiographer productivity, save time and enhance patient care



Everybody benefits from the DRX-Compass.



Patient

- DR technology aids in quicker diagnosis.



Radiographer

- The system is easy to use.
- Choose optional features to improve and enhance workflow.



Rad Admin.

- This fully featured X-ray room is yours at a practical price for true ROI.
- Choose the right receptor to meet your facility's needs today – DR, CR or even film.
- The system is scalable and upgradeable so that you can use CR or film today, and DR in the future, just by upgrading your software and detector.
- CARESTREAM ImageView Software provides you with improved cybersecurity.



Radiologist

- Exceptional image quality supports accurate diagnosis.
- Configure the system to meet your facility's needs.



Physicist/ Bio Engin.

- SmartGrid image processing supports pristine image quality without the use of a traditional grid.

Navigate the All-New DRX-Compass Family X-ray System.

Experience versatility, functionality and superb image quality.



Choose the best configuration for your facility and budget.

Maybe your facility's infrastructure or budget doesn't support an overhead tube.

No worries – the affordable DRX-Compass floor-mount tubehead has a small footprint and installation is a breeze – making it a great choice for your facility.



Meet Our Family of DR Detectors.

Our portfolio of DR detectors includes wireless, shareable and fixed models. Discover the right detector for your needs at carestream.com/detectors

NO MATTER WHICH ROAD YOU'RE ON,
**WE'LL GET YOU WHERE
YOU NEED TO GO.**

SMART IMAGING SOLUTIONS



The Fastest Route to a Successful Imaging Future.

As you travel to the future of imaging, what's your next step? Perhaps you need to accelerate your X-ray workflow. Or add a new imaging solution to your facility to provide better patient care.

Wherever you're headed, we have the smart solutions you need: Full-digital imaging rooms and leading-edge mobile units. Wireless, shareable detectors and CR-to-DR retrofit kits. Affordable CR systems. Advanced digital imagers and our Managed Print Solutions service. And as always, the gold-standard in X-ray film technology.

Start Mapping Your Route Today.

From small clinics, urgent care facilities and specialty practices to large hospitals and imaging centers, every facility will find a Carestream solution to meet the most specific needs. Visit carestream.com and start your journey to greater productivity and a higher standard of patient care.

Carestream also offers Non-Destructive Testing solutions to help ensure quality and safety in the aerospace, petrochemical and other industries, as well as Contract Manufacturing to bring innovative coated products to market.

A Community of Service and Support.

For dependable service, look to our Customer Success Network. We work continuously to improve your imaging performance, help you to innovate as needs change, and make the most of your budget and resources. Carestream's Customer Success Network surrounds you with a dynamic team of experts, with a Single Point of Entry for easy, customized access to the right people in every situation. You and your patients will benefit from the expertise and best practices only Carestream can deliver.



Eclipse: Harness the Power of Decades of Innovation.

Carestream's Eclipse is the engine behind our innovative imaging software. It uses AI technology and proprietary algorithms to significantly increase the value of the entire imaging chain, from capture to diagnosis.

EXAMION GmbH

Erich-Herion-Straße 37
70736 Fellbach, Germany

Phone: +49 711 120 002-0
Fax: +49 711 120 002-22
E-mail: vertrieb@examion.com
Web: www.examination.com

